



March 1, 2019

To whom it may concern

Company Name Takiho Co., Ltd.
 Representative Kazuo Taki, Representative Director,
 Chief Executive Officer
 (Code No. 9982 TSE/NSE 1st Section)
 Contact Atsushi Muto, Director,
 Senior Managing Executive Officer
 General Manager, Administrative Division
 (TEL. +81-52-587-7111)

Notice regarding organizational changes and personnel transfers

Takiho Co., Ltd. will carry out organizational changes and personnel transfers on March 1, 2019, as follows.

1. Organizational changes

(1) Purpose of organizational changes

- ◇ The Textile Department and Global Trading Department will be consolidated in order to strengthen our system for selling imported fabric within Japan, and to expand distribution of original merchandise in both Japan and overseas.
- ◇ A Coordinate Development Team will be added to our General Planning & Policy Sales Office in order to enhance planning and proposal capabilities to major specialty stores.
- ◇ A Sustainable Team will be added to our New Business Development Office, and together with promoting the Recycling Project we started last year with our New York Branch, we will develop environment friendly materials.
- ◇ A Komeda Department will be added to the organization, transferring the operation of Komeda's Coffee from our wholly-owned subsidiary company to the parent company with the aim of strengthening sales and increasing management efficiency.

(2) Please refer to the attached organizational chart (comparison chart).

2. Changes in appointed duties for directors

Name	New	Former
Satoshi Okamoto	Director, Senior Managing Executive Officer, Executive General Manager of Sales Division, Person in Charge/Sales Dept. II and Quality Control Office	Director, Senior Managing Executive Officer, Executive General Manager of Sales Division, Person in Charge/Sales Dept. II, Textile Dept. and Global Trading Dept., General Manager/Outlet Sales Dept. and General Planning & Policy Office, Person in Charge/Quality Control Office

(Translation)

Name	New	Former
Masahiko Ikeda	Director, Executive Officer, Person in Charge/Ladies' Wear Dept. IV, V, Ladies' Wear Dept. and Ladies' Wear Sales Dept. of Sales Dept. I, General Manager/ Ladies' Wear Dept. IV and General Planning & Policy Office, Person in Charge/Komeda Dept., Manager/Osaka Branch	Director, Executive Officer, Person in Charge/Ladies' Wear Dept. IV and V of Sales Dept. I, General Manager/Ladies' Wear Dept. IV, Manager/Osaka Branch
Kentaro Yunoki	Director, Executive Officer, Person in Charge/Ladies' Wear Dept. I, II, and III of Sales Dept. I, Person in Charge/New Business Development Office	Director, Executive Officer, Person in Charge/Sales Dept. I, Ladies' Wear Dept. II and III

3. Changes in appointed duties for executive officers

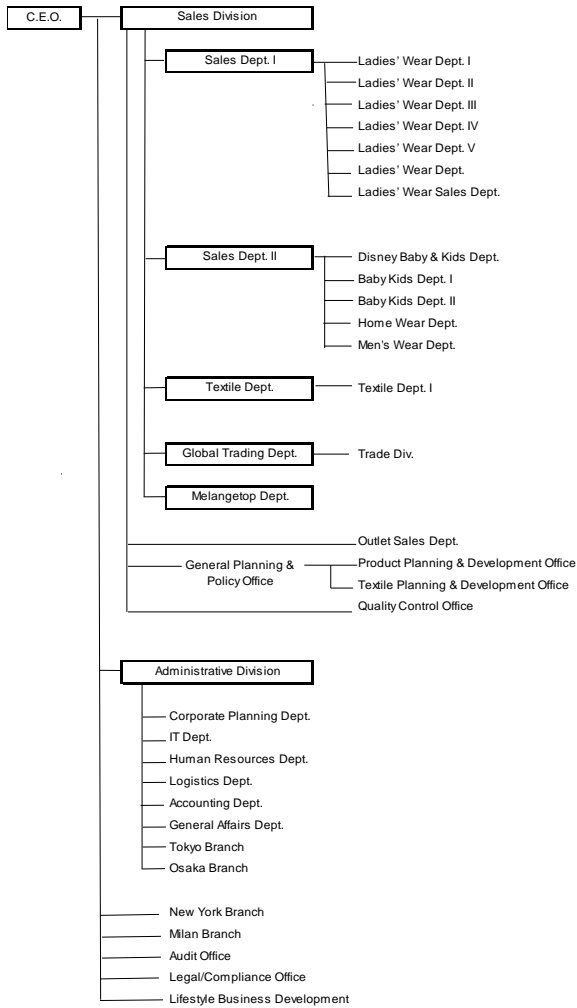
Name	New	Former
Norio Wakayama	Executive Officer, Special Appointive Manager of Production, Assistant to Executive General Manager of Sales Division	Executive Officer, General Manager of Ladies' Wear Dept. I
Toshiaki Ichihara	Executive Officer, General Manager/Ladies' Wear Dept. I,	Executive Officer, General Manager/Ladies' Wear Dept.

4. Personnel transfers

Name	New	Former
Noboru Iwata	Person in Charge/Global Textile Dept.	General Manager/Trade Div.
Hidenori Itakura	General Manager/Ladies' Wear Dept. II	General Manager/Men's Wear Dept.
Takehiko Matsubara	General Manager/Ladies' Wear Dept.	Specially Appointive Manager of Production, Assistant to Executive General Manager of Sales Division
Kazuto Yuji	General Manager/Men's Wear Dept.	General Manager/Ladies' Wear Dept. II
Yoichiro Taniguchi	General Manager/Textile Dept.	Manager/Textile 711 Section and Textile 692 Section of Textile Div. I
Tabito Tsuchiya	General Manager/Trade Div.	Manager/Trade 621 Section of Trade Div.
Hiroyuki Matsumoto	General Manager/Coordinates Development Team of General Planning & Policy Office	Sales Manager, Assistant to Person in Charge of Sales Dept. I
Yoshishige Uchida	General Manager/Komeda Dept.	Specially Appointed Assistant to the C.E.O.

Organization Chart (Comparison Chart)

Before changes



After changes As of March 1, 2019

